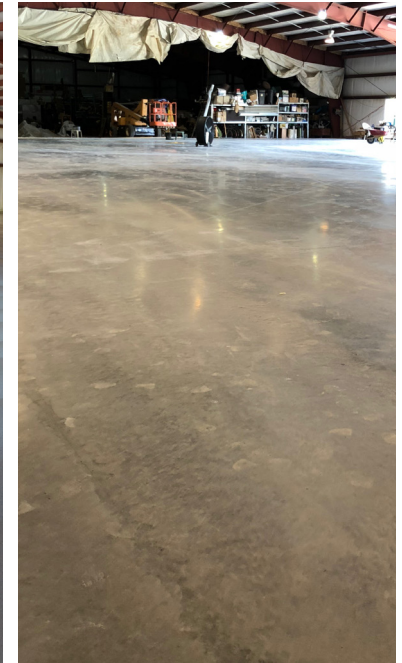


PROJECT DATA

APPLICATION TYPE	Slab on grade
OWNER	Allen Brown
ENGINEER	CRT Concrete Consulting
CONCRETE CONSULTANT	TWC Concrete Services
READY-MIX CONCRETE SUPPLIER	Ernst
FIBER SUPPLIER	FiberForce
FIBER TYPE & DOSAGE	FiberForce 750™ 6.0 lbs per yard



DETAILS

VOLUME	220 cubic yards
DIMENSIONS	94' by 118' 6" thick
PROJECT DATE	June 2018

FiberForce achieved our goal was by assisting to engineer a joint free slab with this 6" thick slab covering over 11,000 sq.ft. Making use of top size aggregate of 1.5" and a 3,500 psi concrete mix, the addition of 6 pounds per cubic yard of our engineered blended FiberForce 750 was utilized in lieu of traditional reinforcement. With the use of a high dose of FiberForce 750, a laser screed and wet cure blanket by Transshield USA helped to achieve a 11,000 sq.ft. crackless slab.