

PROJECT DATA

APPLICATION TYPE	Topping slab for stadium flooring in pedestrian areas
------------------	---

PARTICIPANTS

OWNER	Colorado State University
-------	---------------------------

ENGINEER	Martin Marietta
----------	-----------------

CONCRETE CONTRACTOR	Mortenson
---------------------	-----------

READY-MIX CONCRETE SUPPLIER	Martin Marietta
-----------------------------	-----------------

FIBER SUPPLIER	FiberForce
----------------	------------

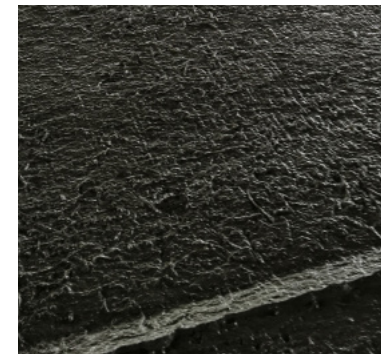
FIBER TYPE, LENGTH, AND DOSAGE	FiberForce 650™ 1.5" 4 lbs. pcy
--------------------------------	---------------------------------------

DETAILS

YARDS	4 pounds per cubic yard
-------	-------------------------

THICKNESS	5" thick 5000 psi concrete
-----------	-------------------------------

PROJECT DATES	June 2016 through August 2016
---------------	-------------------------------



Construction for the new Colorado State University Rams football stadium broke ground in September 2015. The engineers at Martin Marietta decided to use FiberForce 650 fibers for topping slab along with welded wire mesh. The fibers and wire mesh helped to limit cracking in a 5" thick slab in pedestrian areas on an elevated deck. This stadium flooring will be heavily exposed to foot traffic and has a medium broom finish.