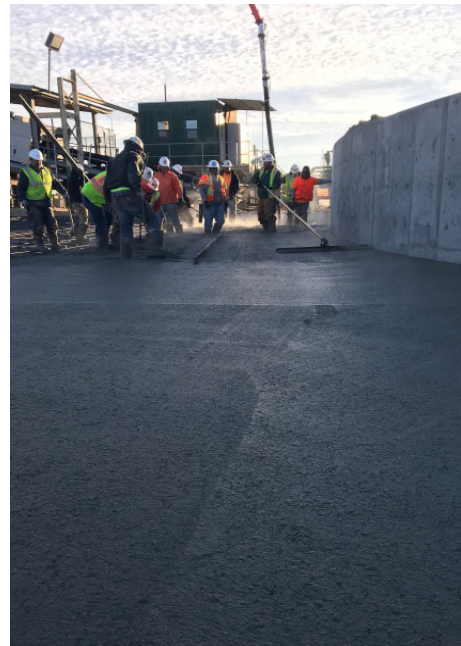


**PROJECT DATA**

APPLICATION TYPE	Slab on Ground
<b>PARTICIPANTS</b>	
OWNER	Western Metals Recycling, LLC.
ARCHITECT	Clem N Sons Concrete, Inc.
ENGINEER	Rob Yates - FiberForce™
CONCRETE CONSULTANT	Martin Marietta
READY MIX CONCRETE SUPPLIER	Martin Marietta
FIBER SUPPLIER	FiberForce™
FIBER TYPE & DOSAGE	FiberForce 1000 HP™ 3 lbs. pcy
<b>DETAILS</b>	
YARDS	320 cubic yards
DIMENSIONS	12" Slab, 4500 PSI Strength
PROJECT DATES	July - October 2017



Western Metals Recycling hired Clem N Sons Concrete to construct a slab on ground of over 300 cubic yards with Martin Marietta as the concrete supplier. The slab will be used to store extremely heavy metal pieces. After consultation with FiberForce's Applications Engineer, Rob Yates, it was determined that one of the two mats of reinforcement could be omitted and replaced with fiber. Clem N Sons Concrete used rebar mat of #5 @ 12" O.C.E.W. in conjunction with 3 lbs. per cubic yard of FiberForce 1000 HP™. This combination of reinforcement lead to lower rates of shrinkage cracking in a 12" slab. Neither the contractor nor the ready mix producer reported any significant issues with balling fibers, poor pumping, or finishability.