

PROJECT DATA

APPLICATION TYPE	Shotcrete Canal Lining
------------------	------------------------

PROJECT PARTICIPANTS

OWNER	PG&E
-------	------

ENGINEER	Sage Engineers, Inc.
----------	----------------------

CONCRETE CONTRACTOR CONSULTANT	Dees-Hennessey, Inc.
--------------------------------	----------------------

READY-MIX CONCRETE SUPPLIER	Hansen Bros. Enterprises
-----------------------------	--------------------------

FIBER SUPPLIER	FiberForce
----------------	------------

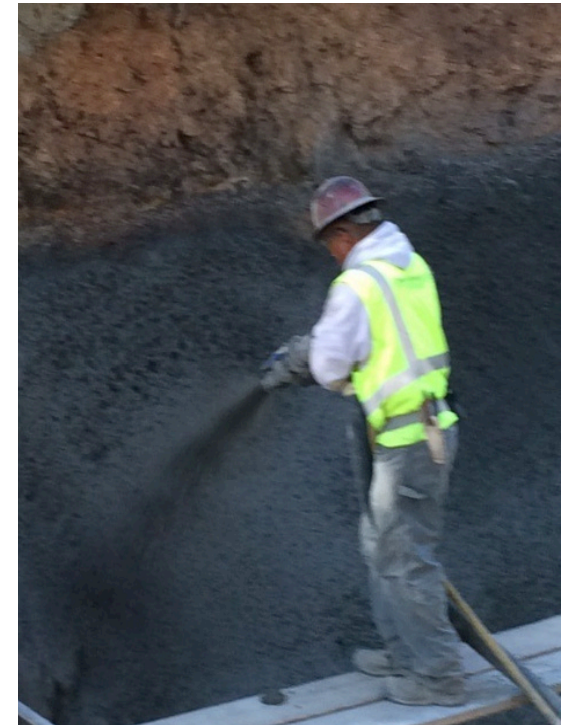
FIBER TYPE & DOSAGE	FiberForce 750™ 5.0 lbs. pcy 7.5 lbs. pcy
---------------------	---

PROJECT DETAILS

YARDS	600 yards
-------	-----------

THICKNESS	4 - 6 inches
-----------	--------------

PROJECT DATE	November 2015
--------------	---------------



PG&E and Sage Engineers tested multiple dosage rates to replace welded wire fabric and rebar #4 at 12-inches O.C.E.W. for shotcrete canal lining. The owner, engineer, and contractor were able to immediately see the benefits of reduced rebound, minimal cracking, and better overall performance with the uses of fibers. The dosage rate varied depending on the thickness of the shotcrete and application in the field. As a result, FiberForce 750™ at both 5.0 and 7.5 lbs. per cubic yard dosage rates were used.