

PROJECT DATA

APPLICATION TYPE	Pavement
------------------	----------

PARTICIPANTS

OWNER	United States Postal Service
-------	------------------------------

ARCHITECT	TKC Design PC (The Korte Company)
-----------	--------------------------------------

ENGINEER	Parsons
----------	---------

CONCRETE CONSULTANT	Roger Langeliers Construction Co.
---------------------	-----------------------------------

READY MIX CONCRETE SUPPLIER	Knife River
-----------------------------	-------------

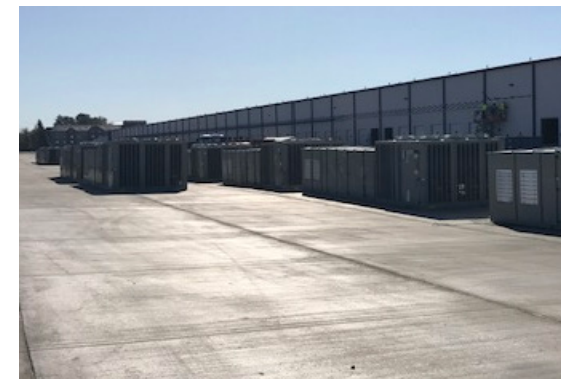
FIBER SUPPLIER	FiberForce™ by ABC Polymer Industries
----------------	---------------------------------------

FIBER TYPE & DOSAGE	Performance Plus DOT™ 4 lbs. pcy
---------------------	-------------------------------------

DETAILS

YARDS	15,000 yards
-------	--------------

PROJECT DATES	June 2017
---------------	-----------



Construction for the new 818,000 square feet **United States Postal Service** distribution facility for the Business Mail Entry Unit and Inspection Services in Portland, OR broke ground on August 2016 and will be complete March 2018. The architect, **TKC Design PC**, and engineer, **Parsons**, used our **Performance Plus DOT™** at 4 pounds per cubic yard on pavements for the long haul unloading shipment areas, parking lot, and apron around the loading docks. The Engineers at Parsons used Performance Plus DOT fibers to replace #4 Rebar at 16 inch on center each way, which saved \$50,000 on labor and an additional 2 weeks on the aggressive 18-month project schedule.