

PROJECT DATA

APPLICATION TYPE	Slab on Grade
------------------	---------------

PARTICIPANTS

OWNER	Storage Place Hancock, LLC.
-------	-----------------------------

ENGINEER	Rydell Engineering
----------	--------------------

CONCRETE CONTRACTOR	Salem Concrete
---------------------	----------------

READY-MIX CONCRETE SUPPLIER	Viesko Quality Concrete
-----------------------------	-------------------------

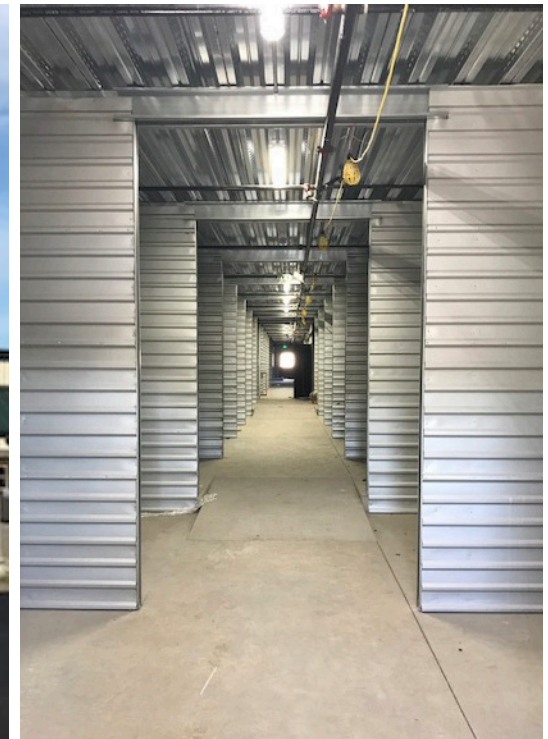
FIBER SUPPLIER	FiberForce by ABC Polymer Industries
----------------	--------------------------------------

FIBER TYPE, LENGTH, AND DOSAGE	FiberForce 650™ 3 lbs. pcy
--------------------------------	-------------------------------

DETAILS

YARDS	1,200 yards
-------	-------------

PROJECT DATES	July 2017
---------------	-----------



The owners, **Storage Place Hancock, LLC.**, built a new self storage facility to serve the Newberg area, just outside of Portland. The Project Engineer, **Leonard Rydell**, decided to use our **FiberForce 650™** fibers for 6 inch thick Slab on Grade with 15 feet joint spacing. FiberForce 650 was used to replace #4 Rebar at 18 inch on center each way for Slab on Grade. Thus, by replacing rebar with fibers, the owners were able to not only save on labor costs, but also reduce the project timeline.