

PROJECT DATA

APPLICATION TYPE	Shotcrete Canal Lining
------------------	------------------------

PROJECT PARTICIPANTS

OWNER	PG&E
-------	------

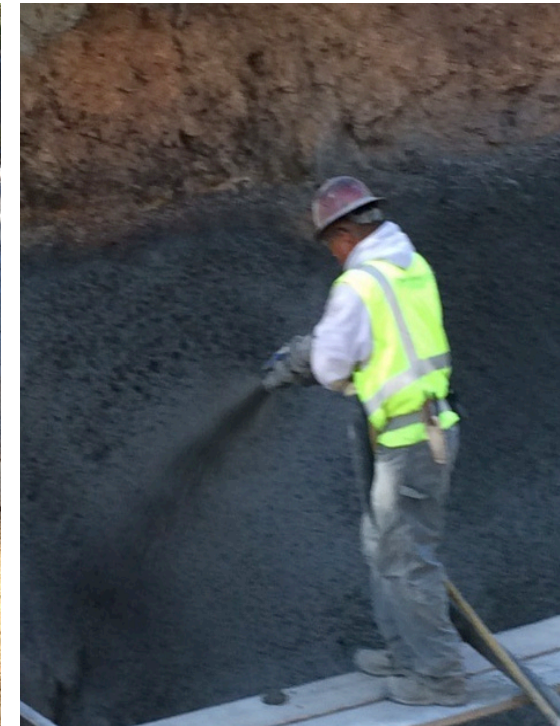
ENGINEER	Sage Engineers, Inc.
----------	----------------------

CONCRETE CONTRACTOR CONSULTANT	Dees-Hennessey, Inc.
--------------------------------	----------------------

READY-MIX CONCRETE SUPPLIER	Hansen Bros. Enterprises
-----------------------------	--------------------------

FIBER SUPPLIER	ABC Polymer Industries, LLC.
----------------	------------------------------

FIBER TYPE, LENGTH, AND DOSAGE	Performance Plus DOT™ 5 lbs. pcy 7.5 lbs. pcy
--------------------------------	---



PROJECT DETAILS

YARDS	600 yards
-------	-----------

THICKNESS	4 - 6"
-----------	--------

PROJECT DATE	November 2015
--------------	---------------

PG&E and **Sage Engineers** tested multiple dosage rates to replace welded wire fabric and rebar #4 at 12" OCEW for shotcrete canal lining. The owner, engineer, and contractor were able to immediately see the benefits of reduced rebound, minimal cracking, and better overall performance with the uses of fibers. The dosage rate varied depending on the thickness of the shotcrete and application in the field. As a result, both 5 and 7.5 lbs. per cubic yard dosage rates were used.