

**PROJECT DATA**

APPLICATION TYPE	Shotcrete Canal Lining
------------------	------------------------

**PROJECT PARTICIPANTS**

OWNER	PG&E
-------	------

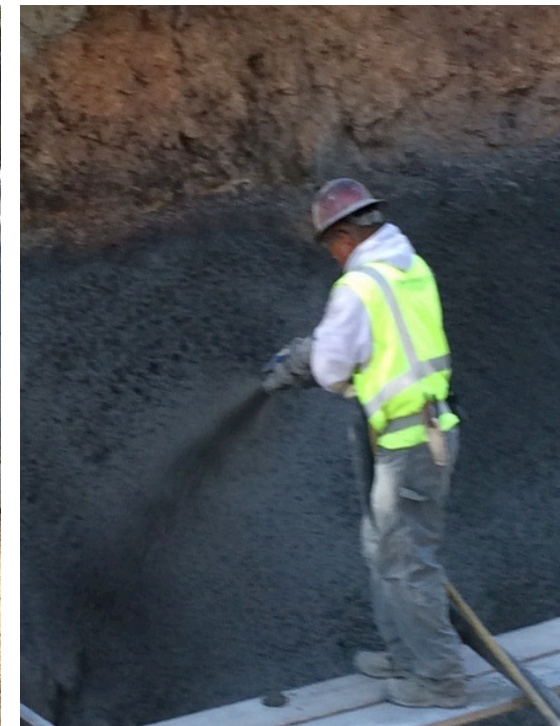
ENGINEER	Sage Engineers, Inc.
----------	----------------------

CONCRETE	Dees-Hennessey, Inc.
----------	----------------------

READY-MIX CONCRETE SUPPLIER	Hansen Bros. Enterprises
-----------------------------	--------------------------

FIBER SUPPLIER	FiberForce
----------------	------------

FIBER TYPE & DOSAGE	Performance Plus DOT™ 5 lbs. pcy 7.5 lbs. pcy
---------------------	---



**PROJECT DETAILS**

YARDS	600 yards
-------	-----------

THICKNESS	4 - 6"
-----------	--------

PROJECT DATE	November 2015
--------------	---------------

PG&E and Sage Engineers tested multiple dosage rates to replace welded wire fabric and rebar #4 at 12" OCEW for shotcrete canal lining. The owner, engineer, and contractor were able to immediately see the benefits of reduced rebound, minimal cracking, and better overall performance with the uses of fibers. The dosage rate varied depending on the thickness of the shotcrete and application in the field. As a result, both 5 and 7.5 lbs. per cubic yard dosage rates were used.